

Mini House Wide,  
fifteen square meters.  
By Jonas Wagell  
Design & Architecture  
for Sommarnöjen.

[www.minihouse.se](http://www.minihouse.se)

Mini House Wide  
15 square meters



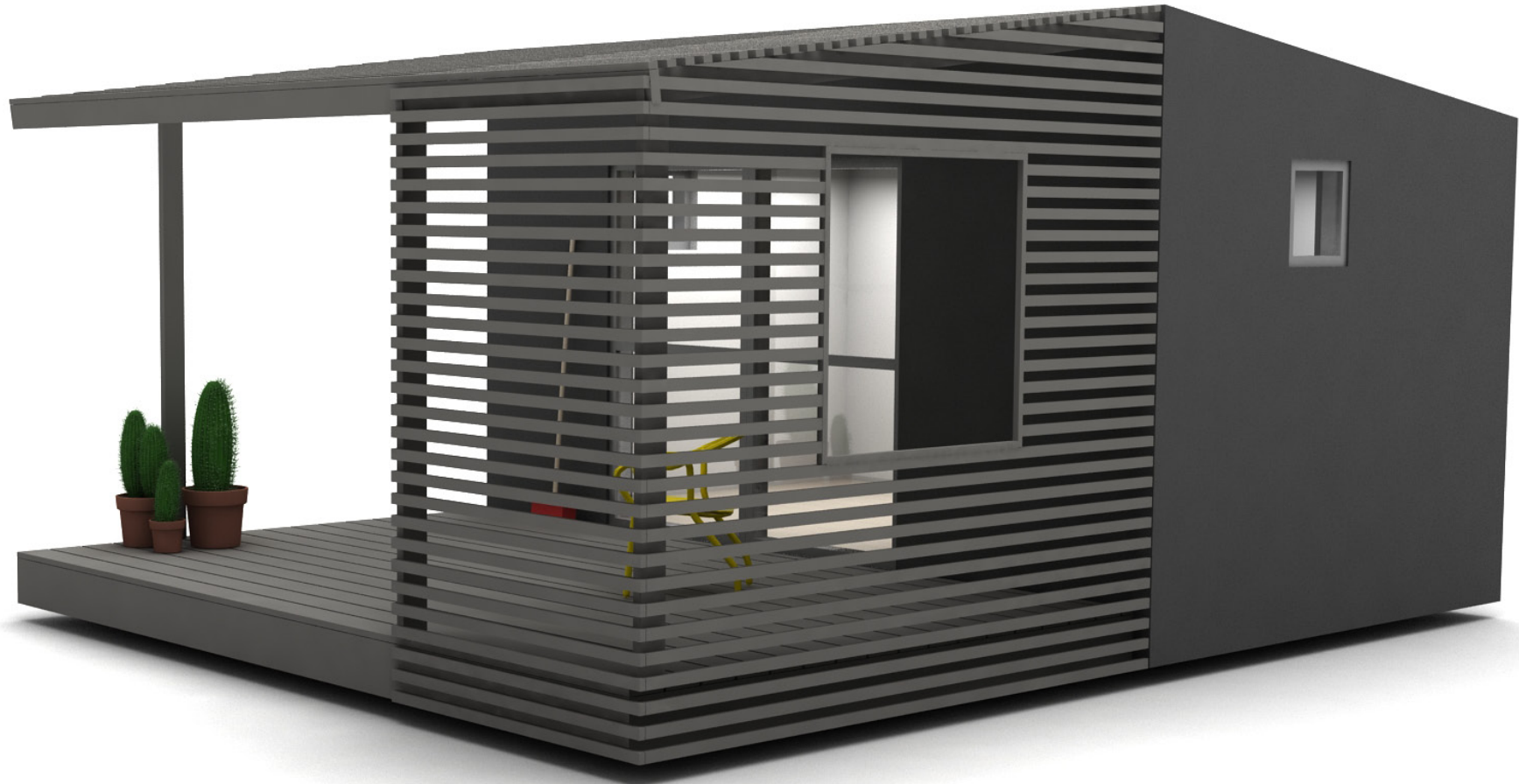
Mini House Wide  
15 square meters



Mini House Wide  
15 square meters



Mini House Wide  
15 square meters



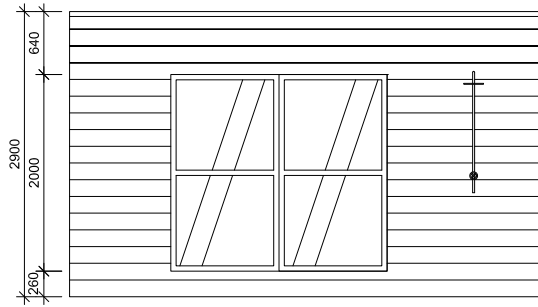
Mini House Wide  
15 square meters



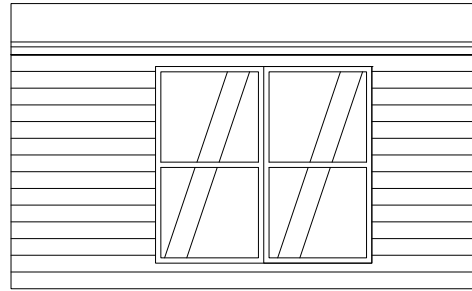
Mini House Wide  
15 square meters  
Kitchen unit + bathroom



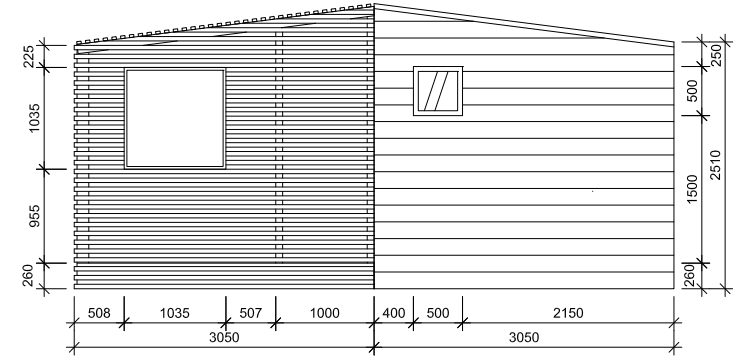
# Mini House Wide - 15 square meters



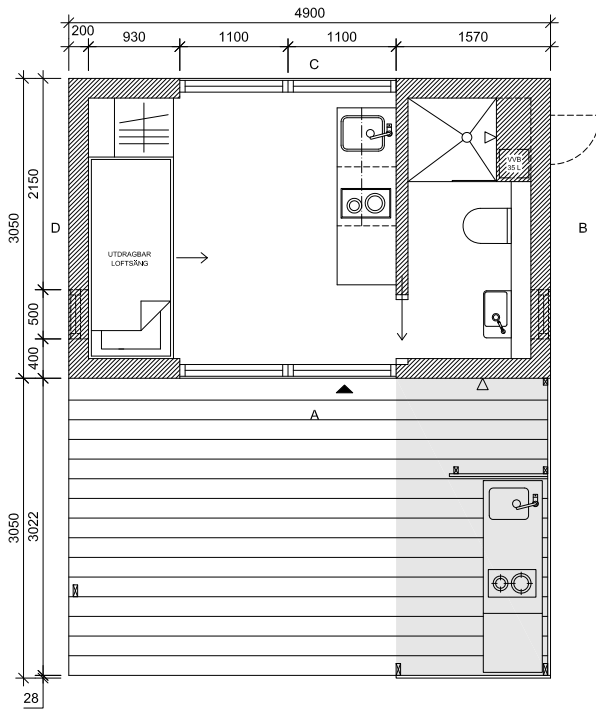
FASAD A  
SKALA 1:50



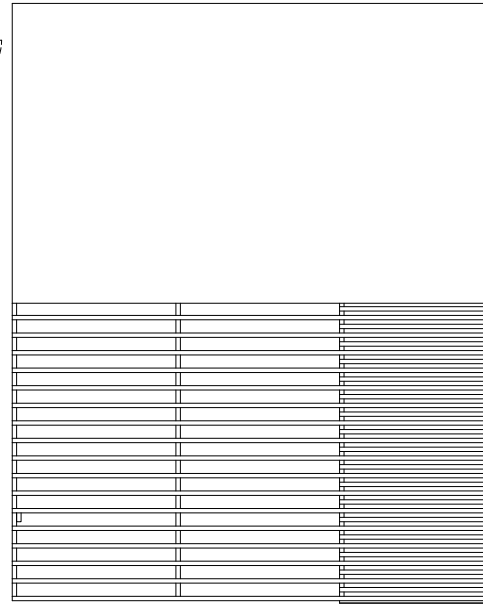
FASAD C  
SKALA 1:50



FASAD B  
SKALA 1:50



GOLVPLAN  
SKALA 1:50



TAKPLAN  
SKALA 1:50



SHOWER AREA TO HAVE DIVIDING SCREEN OF 12 MM HARDENED GLASS RECESSED IN TRACK IN WALL AND FLOOR  
GLASS COLOUR TBC

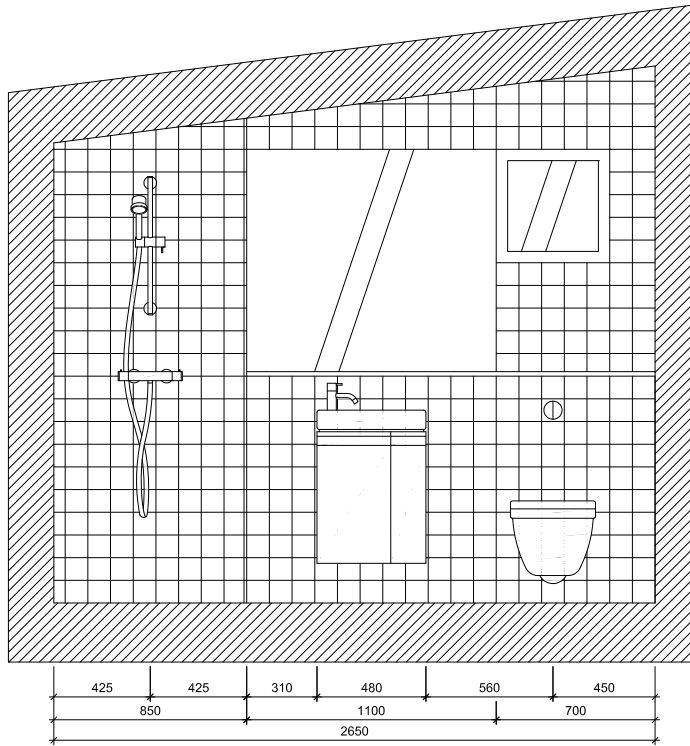
MIRROR GLUED TO WALL IN LEVEL WITH TILES ABOVE EXTENDED WALL

OPENABLE WINDOW TO LEVEL WITH MIRROR, NISCH TO TILES

EXTENDED WALL (D200) TO CONCEAL PIPES, DRAINAGE AND TANK FOR WC. REMOVABLE TOP OF 30 MM WHITE CARRARA MARBLE

SHOWER AREA TO HAVE INCLINATION TO DRAIN (1/50) ACCORDING TO SWEDISH STANDARD

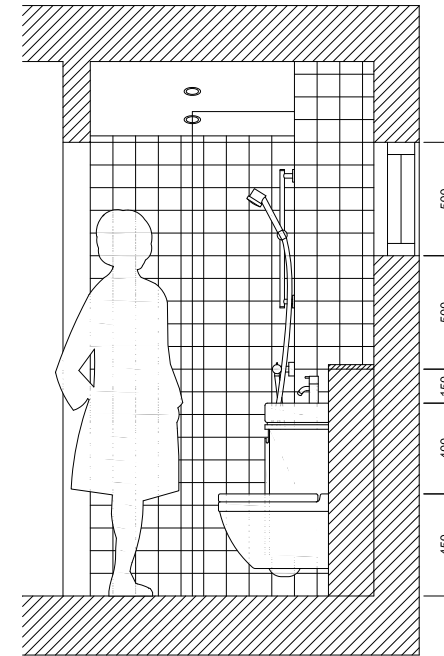
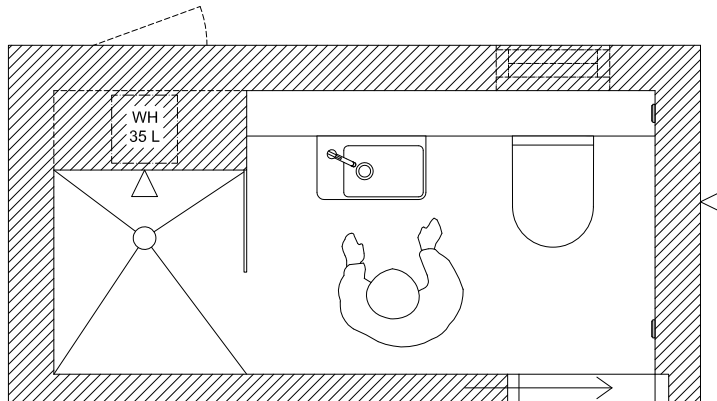
ELEVATION BATHROOM (WIDE MODEL)  
SCALE 1:20



PIPES FOR WATER AND DRAINAGE AND WATER HEATER ETC. TO BE CONCEALED IN HOLLOW SPACE BEHIND EXTENDED WALL. SPACE TO HAVE INSULATED DOOR FROM OUTSIDE

NOTE! WATER PROOF MEMBRANE SHALL INCLUDE HOLLOW SPACE. BUILT-IN PIPES SHALL BE CONNECTED WITH PRESS JOINTS

FLOOR PLAN BATHROOM (WIDE MODEL)  
SCALE 1:20



SECTION A-A BATHROOM (WIDE MODEL)  
SCALE 1:20

POWER OUTLET WITH LID ON SIDE OF SHELF, H1200  
LIGHT SWITCH CLOSE TO SLIDING DOOR, H100

OUTDOOR SHOWER WITH WATER CONNECTION AND SWITCH TO OUTDOOR KITCHEN

**REGULATIONS**  
This document is property of Jonas Wagell Design and Architecture and is protected by copyright laws. It may not be reproduced or copied without written permission.  
All measurements are given in millimeters.

**SPECIFICATIONS**  
Water proof membrane on all surfaces according to Swedish industry standard. Floor to have inclination to floor drainage.  
Pipes for water and drainage and water heater etc. to be concealed in hollow space behind extended wall. Space to be accessible from outside through insulated door.

Note! water proof membrane shall include hollow space. Built-in pipes shall be connected with press joints.

Construction details according to drawing and specifications. For material specifications, colours, purchase information etc - please see separate document.

Manufacturer should advise on construction improvements in regard to quality and cost without compromising design.

All solutions should be approved with samples and written confirmation from architect before manufacture!

**REFERENCES**

REV.	NO.	REVISION	DATE	BY
-	-	-	-	-
STATUS				
PRELIMINARY DOCUMENT				
TYPE				
SOMMARHÖJEN				
<b>JWDA</b> JONAS WAGELL DESIGN & ARCHITECTURE				
PROJECT NUMBER	PROJECT OWNER			
-	TOMAS TJÄJKOVSKI			
DATE	DRAWING			
130724	JW			
PROJECT				
MINI HOUSE WIDE 16 SQM BATHROOM				
PLAN, ELEVATION SECTION				
SCALE ORIGINAL: A3	DRAWING NUMBER	REV.		
1:20, A3	-	-		

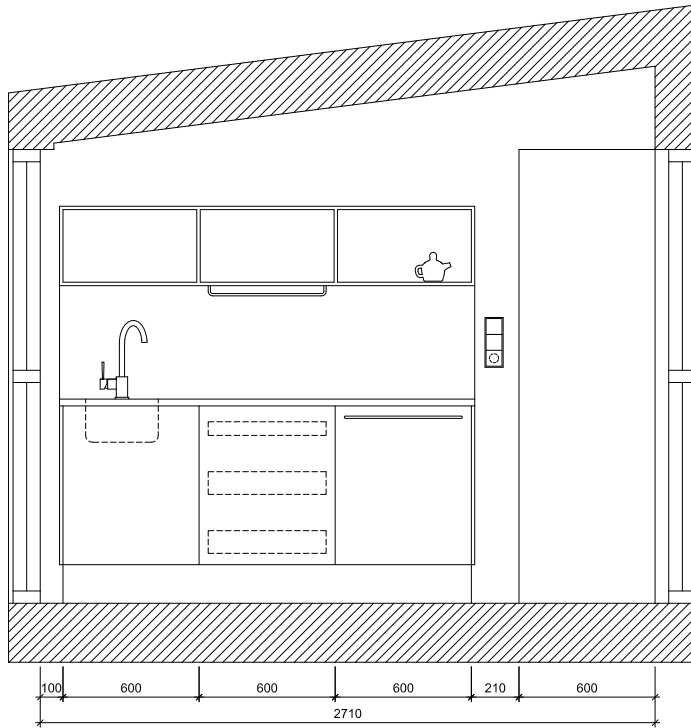
OPEN SHELF WITH STEEL L-PROFILE FRAME AND INLAY SHELVES OF STEEL OR WOOD - SEE SPECIFIC DRAWING FOR DETAILS

WALL COVER OF MARBLE OR SHEET METAL

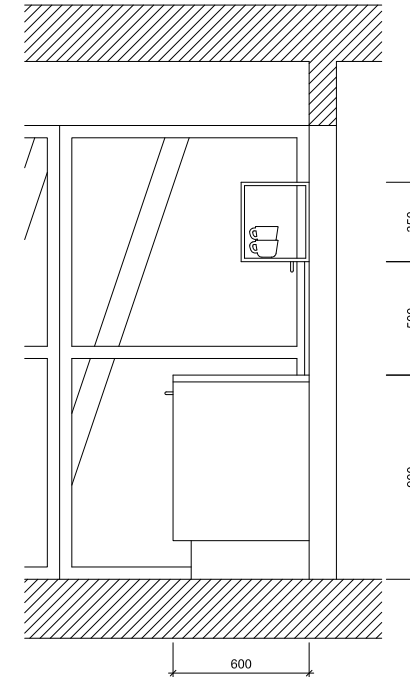
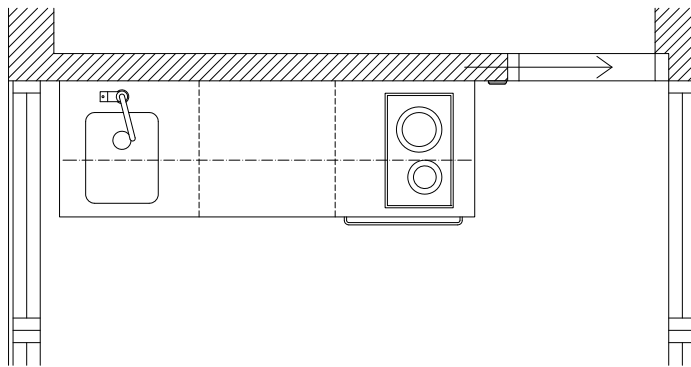
KITCHEN CABINETS WITH SINK, DRAWERS AND INTEGRATED FRIDGE

COUNTER TOP OF MARBLE OR STAINLESS STEEL (SAME AS WALL COVER) WITH INTEGRATED SINK

FRONT ELEVATION  
KITCHEN UNIT  
(WIDE MODEL)  
SCALE 1:20



FLOOR PLAN  
KITCHEN UNIT  
(WIDE MODEL)  
SCALE 1:20



SIDE ELEVATION  
KITCHEN UNIT  
(WIDE MODEL)  
SCALE 1:20

**REGULATIONS**  
This document is property of Jonas Wagell Design and Architecture and is protected by copyright laws. It may not be reproduced or copied without written permission.  
All measurements are given in millimeters.

**SPECIFICATIONS**  
Construction details according to drawing and specifications.  
For material specifications, colours, purchase information etc - please see separate document.

Manufacturer should advise on construction improvements in regard to quality and cost without compromising design.

All solutions should be approved with samples and written confirmation from architect before manufacture!

**REFERENCES**

NO.	REV.	REVISION	DATE	BY
STATUS				
PRELIMINARY DOCUMENT				
TYPE				
SOMMARHÖJEN				
<b>JWDA</b> JONAS WAGELL DESIGN AND ARCHITECTURE				
PROJECT NUMBER	PROJECT OWNER			
-	TOMAS TJÄJKOVSKI			
DATE	DRAWN BY			
130725	JW			
PROJECT				
MINI HOUSE WIDE 16 SQM				
KITCHEN UNIT				
PLAN, ELEVATION				
SCALE ORIGINAL	DRAWING NUMBER	REV.		
1:20, A3	-	-		

WARDROBE WITH INTERIOR SHELVES, DRAWERS AND CLOTHES RACK. MADE OF MDF WITH REINFORCED SIDE TO ALLOW ATTACHMENT OF BED FRAMES. SEE SEPARATE DRAWING FOR DETAILS.

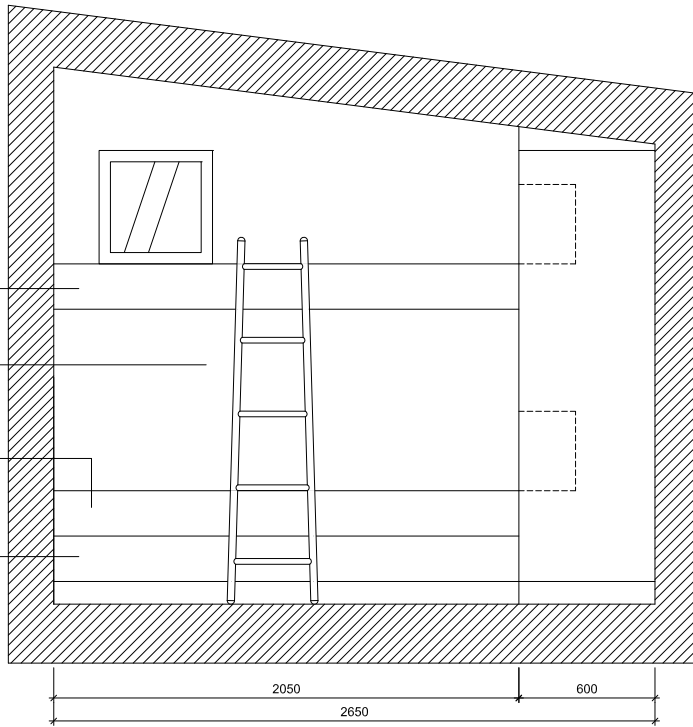
BUNK BED FRAMES ATTACHED TO WALLS

BED FRAME TO HAVE WOOD RIB BOTTOM (FOR FOAM MATTRESS) AND FRONT OF 30 MM MDF WITH OAK VENEER. SEE SPECIFIC DRAWING FOR DETAILS

REMOVABLE STEEL LADDER. SEE SEPARATE DRAWING

BED FRAME WITH EXPANDABLE STEEL STRUCTURE. WIDTH 800-1600 MM. SEE SPECIFIC DRAWING FOR DETAILS

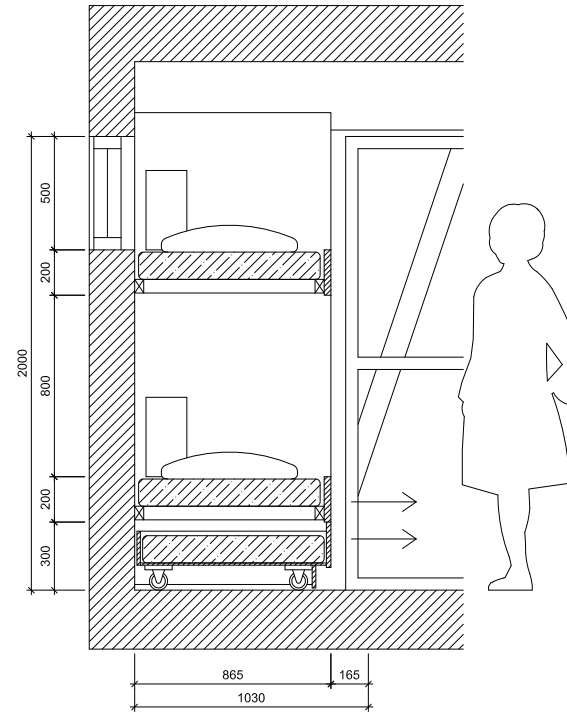
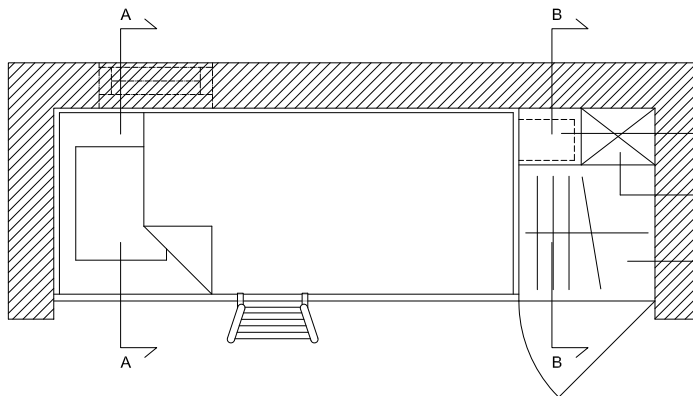
DRAWER BELOW BED FRAME WITH EXTRA MATTRESS W800. RECESSED SKIRTING BOARD ATTACHED TO DRAWER HIDING WHEELS



ELEVATION  
EXTENDABLE LOFT BED +  
WARDROBE  
(WIDE MODEL)  
SCALE 1:20

WALLS TO BE REINFORCED TO ALLOW FIXTURE OF BUNK BED

FLOOR PLAN  
EXTENDABLE LOFT BED +  
WARDROBE  
(WIDE MODEL)  
SCALE 1:20



SECTION A-A  
EXTENDABLE LOFT BED  
(WIDE MODEL)  
SCALE 1:20

TWO STORAGE NICHES WxHxD 16X35X25 CM BEHIND CABINET WITH LED DOWNLIGHT AND POWER OUTLET IN CEILING. ACCESS FROM BED

HOLLOW SPACE FOR ELECTRICAL INSTALLATIONS

WARDROBE (D600) WITH INTERIOR FITTINGS

REGULATIONS  
This document is property of Jonas Wagell Design and Architecture and is protected by copyright laws. It may not be reproduced or copied without written permission.  
All measurements are given in millimeters.

SPECIFICATIONS

REFERENCES

NO.	REVISION	DATE	BY
STATUS			
PRELIMINARY DOCUMENT			
TYPE			
SOMMARHÖJEN			
<b>JWDA</b>			
JONAS WAGELL DESIGN & ARCHITECTURE			
PROJECT NUMBER	PROJECT OWNER		
-	TOMAS TJÄNKOVSKI		
DATE	DRAWING		
130725	JW		
PROJECT			
MINI HOUSE WIDE 16 SQM			
EXPANDABLE LOFT BED + WARDROBE			
PLAN, ELEVATION SECTION			
SCALE ORIGINAL	DRAWING NUMBER	NO.	
1:20, A3	-	-	-

Jonas Wagell Design & Architecture  
Lindvallsplan 10  
117 36 Stockholm, Sweden  
info@jonaswagell.se

[www.jonaswagell.se](http://www.jonaswagell.se)

Jonas Wagell is trained in graphic design, marketing, product design and architecture at schools including Konstfack, Beckmans, Berghs and Parsons and has a back record in strategic project management and communication.

'My design is focused on functional items rather than artistic objects. I appreciate products that can be used everyday and be part of people's lives. I believe affection and emotion is more important than exclusive and expensive materials. My aim is to create simplistic objects that are intuitive and easy to use, but try to add something personal and expressive. I've come to call this generous minimalism.'

